

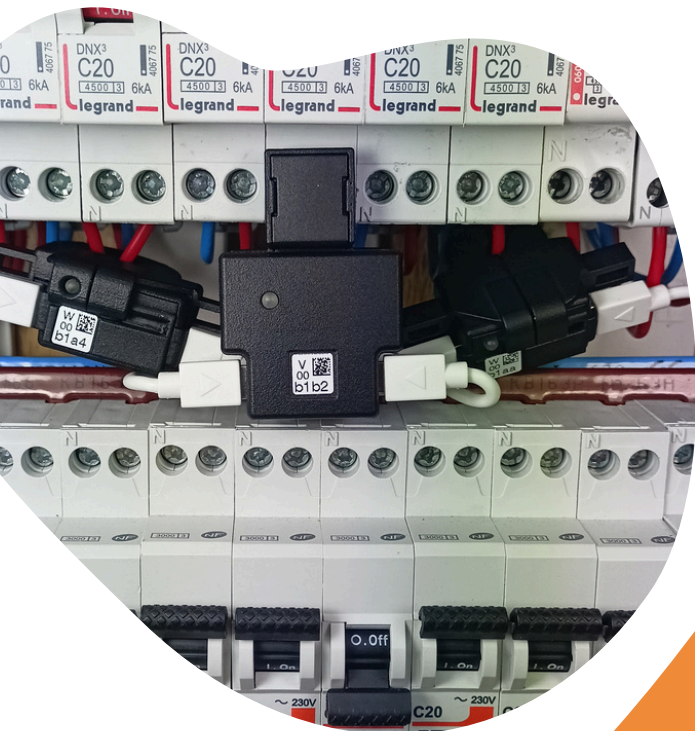


Moving from “reporting-only” measurement to actionable insights

- ➔ Measure to act, not just to report
- ➔ With the same investment, get meaningful, real-time insights
- ➔ Basic measurement is no longer enough you need the keys to understand and take action



As electricity becomes more complex, data must enable **real-time analysis, decision-making, and response.**





Electricity has changed - it is no longer stable or predictable

- ➔ Electricity systems have become **more complex** and **less predictable**.
- ➔ End-uses are increasingly electrified and diversified:
 - Electric vehicles
 - Heat pumps
 - Self-consumption
 - Energy storage
 - Connected equipment and smart loads
- ➔ At the same time, generation is becoming more intermittent due to solar and wind.





Electricity has changed - especially load profiles

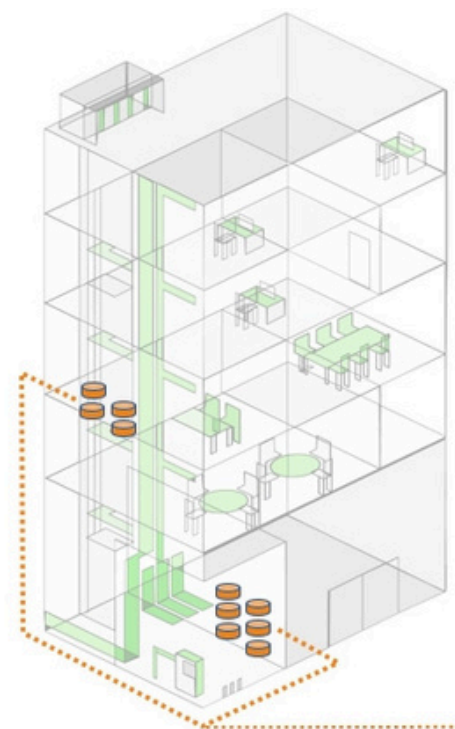
➔ Consumption is becoming more variable, more dynamic, and harder to predict.

Sites with similar activities and comparable consumption levels can now have completely different load profiles and those profiles evolve rapidly over time.

➔ Behind seemingly similar consumption levels lie increasingly different realities. As a result, the key to controlling energy use, costs, and regulatory compliance lies in knowing precisely:

- **When energy** is consumed
- **Which end-uses** are involved
- How to **react quickly**

➔ More complex and variable consumption patterns require a new approach to **monitoring, analysis, and energy management.**





Electricity has changed - measurement must evolve accordingly

➔ A more dynamic and complex reality calls for smarter, more responsive measurement and monitoring.

➔ **Gain deeper insight**

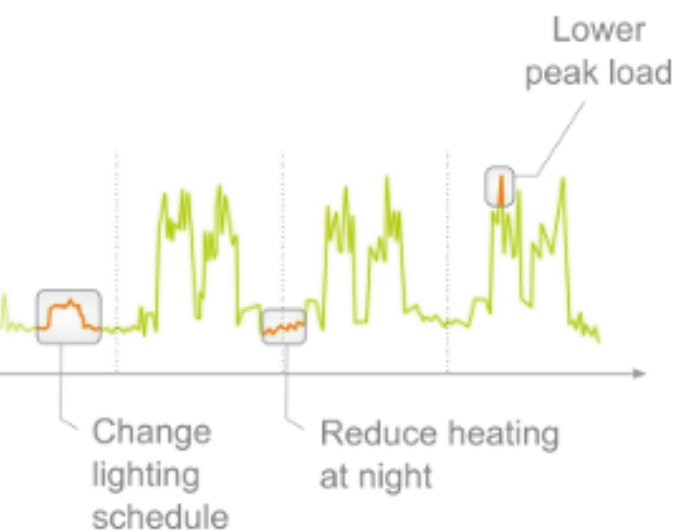
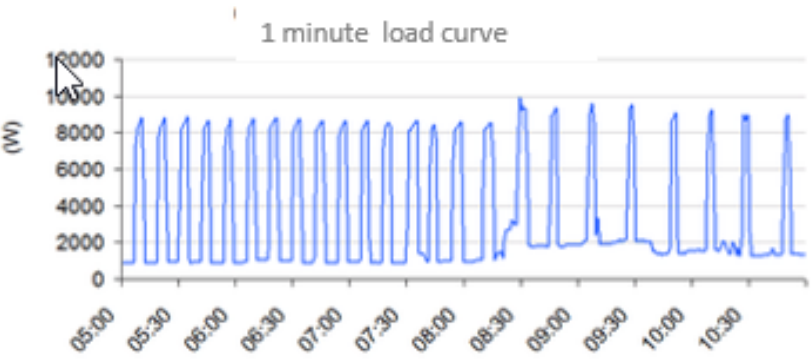
To identify savings opportunities, detect anomalies, or perform meaningful benchmarking, it is now essential to have:

- Measurement intervals of a few minutes or less
- Sub-metering by end-use and/or by zone

➔ **React faster**

The growing number and variability of end-uses require greater responsiveness:

- Enable participation in demand-side flexibility
- Quickly detect consumption drifts
- Identify equipment left running unnecessarily
- Trigger real-time alerts for critical faults or power threshold exceedance



Electricity Metering & Sub-metering



The right data, at the right time, for the right decision

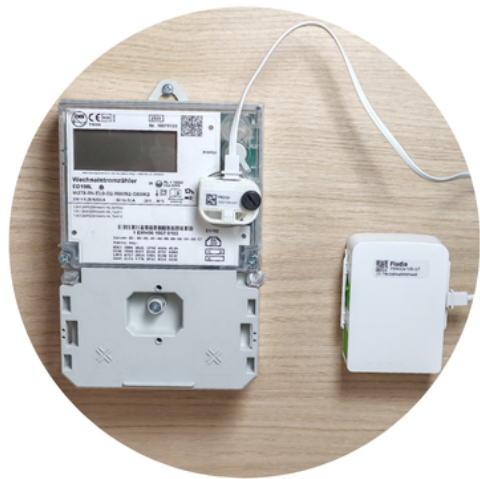
with IoT sensors that combine measurement granularity, responsiveness, and operational efficiency

➔ IoT sensors designed for action:

- Quick and easy to install
- Compatible with all meters and panels
- No power interruption required

➔ Remotely configurable for:

- Fine-grained measurement when detailed analysis is needed
- Faster data reporting on critical end-uses
- Real-time alerts on key events
- A balanced trade-off between battery life and reporting frequency



LTE-M

NB-IoT

LoRaWAN

Electricity Metering & Sub-metering



The right data starts with the right products

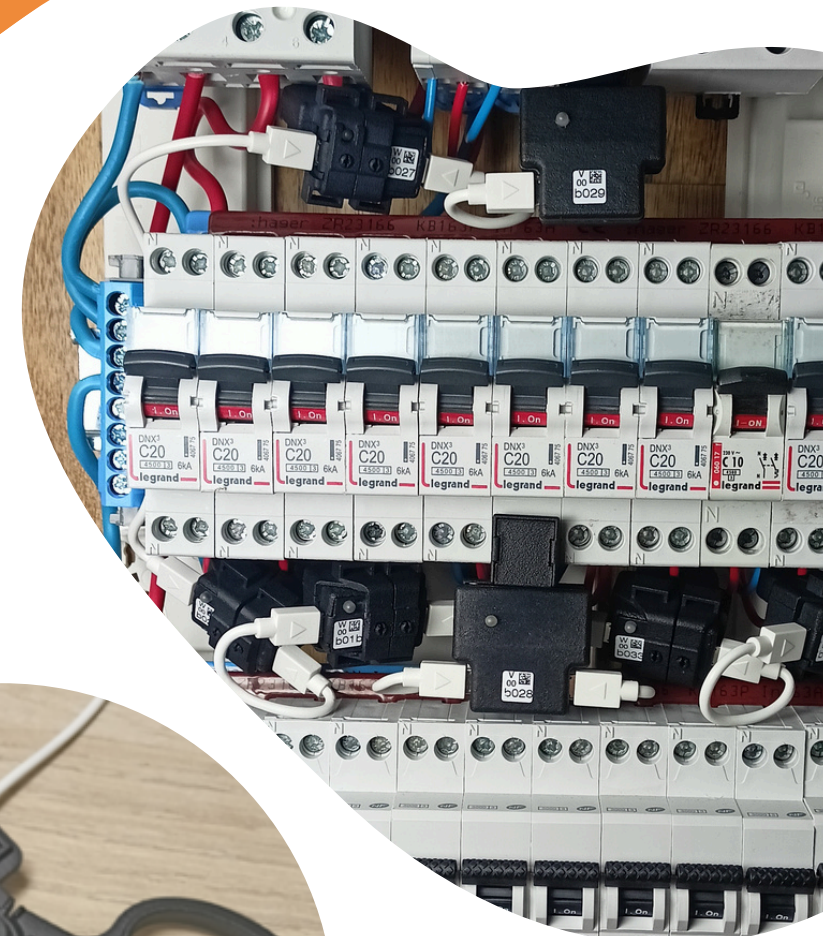
- ➔ Designed and manufactured in France
- ➔ Plug & play
- ➔ Innovative
- ➔ Scalable and future-proof



*sensors for
metering*



*sensors for
sub-metering*



Electricity Metering & Sub-metering

Find out more about our products



www.fludia.com



FM432e LoRaWAN
tagawatt NB-IoT & LoRaWAN
FM442e NB-IoT

